

# HabasitLINK<sup>®</sup>

## M2620 Flat Top Heavy Duty 1"



Your Source For Habasit  
Belting And Chain

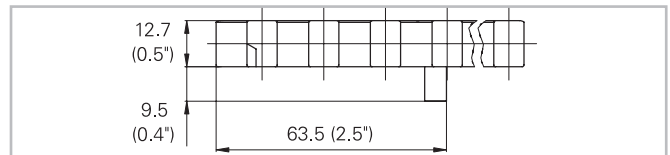
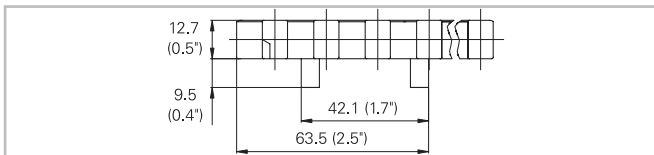
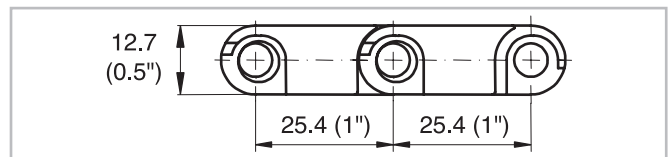
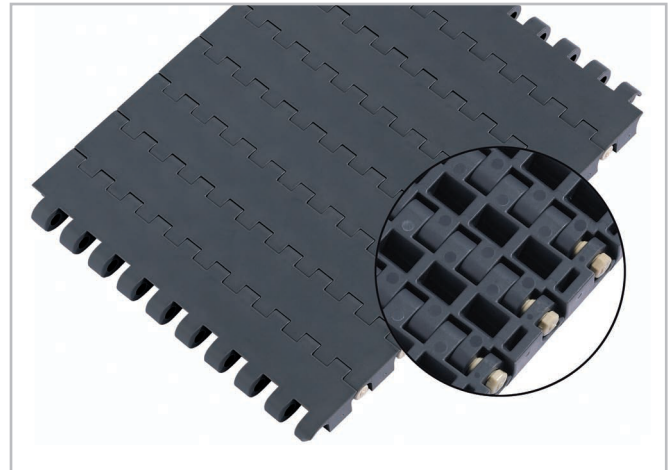
www.StilesEnterprises.com • 1-800-325-4232

### Description

- Heavy duty belt
- 12.7 mm (0.5") thick
- High strength and stiffness
- 0% open area
- Closed hinge
- Rod diameter 6 mm (0.22")
- Smart Fit rod retention
- Double row solid and split sprockets

### Available accessories

- Tab modules with 1 or 2 tabs
- Code: -T1 single tab / -T2 double tab



### Belt data

Belt material		PP		POM		PA	PBT +FR
Rod material		PP	PA	PBT	PA	PA	PA
Nominal tensile strength F' <sub>N</sub> straight run	N/m	24000	26500	45000	35000	45000	23000
	lb/ft	1644	1815	3083	2397	3083	1575
Temperature range	°C	5 - 105	5 - 105	-40 - 93	-40 - 93	-46 - 130	-40 - 130
	°F	40 - 220	40 - 220	-40 - 200	-40 - 200	-50 - 266	-40 - 266
Temperature maximum (short-term)	°C					160	150
	°F					320	302
Belt weight m <sub>B</sub>	kg/m <sup>2</sup>	9.1	9.1	14.0	14.0	11.7	14.5
	lb/sqft	1.87	1.87	2.88	2.88	2.40	2.98

PA belt fulfills UL 94 V2 and ISO 340.

PBT +FR belt fulfills UL 94 V0 and ISO 340.

Diameter of idling rollers (minimum)		Diameter of support rollers (minimum)		Diameter for gravity take-up and center drive rollers (minimum)		Backbending radius for elevators without sideguards or hold down devices (minimum)	
mm	inch	mm	inch	mm	inch	mm	inch
40	1.6	50	2	100	4	150	6

### Standard range of belt widths b<sub>0</sub>

mm (nom.)	85	170	255	340	425	510	595	680	765	850	935	1020	1105	etc.
inch (nom.)	3.35	6.69	10.04	13.39	16.73	20.08	23.43	26.77	30.12	33.46	36.81	40.16	43.50	etc.

Real belt widths are in most cases 0.1% to 0.3% smaller.

Standard belt widths in increments of 85 mm (3.35"). Non-standard widths are offered in increments of 17 mm (0.67"). Smallest possible width 85 mm (3.35").